



2015 – 2016

Leadership and Coaching for Rtl Implementation

Purpose

To provide administrators and teacher leaders with the skills to support schools and districts in the implementation of the Wisconsin Rtl Framework.

Who should attend

District or school teams of principals, district leaders, teacher leaders, instructional coaches, internal and external coaches.

Participants will

- ◆ Learn and practice strategies for leading and coaching both teams and individuals for change in an Rtl Framework, and supporting the implementation of Rtl for academics and behavior.
- ◆ Establish coaching as the capstone of a systematic, articulated professional development plan that is aligned with the district's or schools Rtl framework.
- ◆ Begin to understand the importance of a consistent process to gather and use data for identifying goals, determining next steps, planning and committing to action to improve systems and results.
- ◆ Provide a continuum of leadership and coaching strategies and styles in response to teacher knowledge, skills and needs, stages of change implementation, and levels of team development.
- ◆ Identify and assess specific elements of a positive school culture that guarantees learning for all.

Format and Expectations

This six-day training is designed to help participating teams to move forward with the implementation of their Rtl framework. Class activities include lecture and presentation of theory, reading, discussion, group and partner work, modeling and demonstration of leadership and coaching strategies, written and verbal reflection, and practice and feedback. Participants will work in triads with opportunities to coach peers, observe peer coaches, receive coaching from peers, and give and receive feedback.

Following the second session, participants will enroll a coaching client and conduct a minimum of five coaching sessions with the client outside of class between sessions two and six.

2015-2016 Training Dates & Locations

LaSure's Banquet Hall | Oshkosh

Oct. 15, Nov. 20, Dec. 8, Jan. 19, Feb. 19, Apr 13

Olympia Resort | Oconomowoc

Oct. 20, Nov. 10, Dec. 3, Jan. 26, Feb. 24, Apr. 19

Mequon-Thiensville Sch Dist.

Range Line Elementary | Mequon

Oct. 16, Nov. 13, Dec. 7, Jan. 25, Feb. 26, Apr. 21

Holiday Inn Hotel | Wausau/Rothschild

Oct. 14, Nov. 18, Dec. 9, Jan. 15, Feb. 18, Apr. 12

Radisson Hotel | Kenosha/Pleasant Prairie

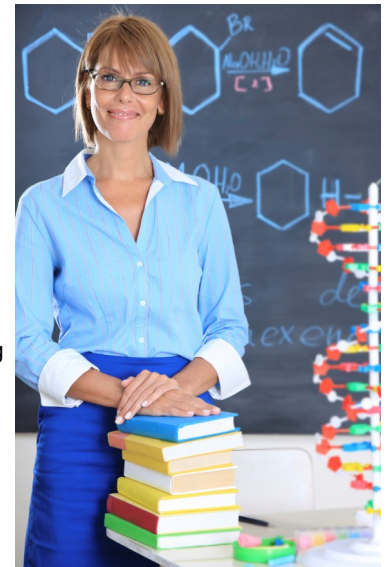
Oct. 21, Nov. 11, Dec. 4, Jan. 20, Feb. 23, Apr. 26

Tundra Lodge Resort | Green Bay

Nov. 9, Nov. 24, Feb. 8, Mar. 14, Apr. 7, May 9

Participant teams must

- ◆ Have an in-depth understanding of Wisconsin's Framework for Rtl
- ◆ Have attended either the Wisconsin Rtl Framework training **and** completed the School Implementation Review (SIR) or attended the PBIS Tier 1 training **and** completed the Benchmarks of Quality (BoQ)
- ◆ Be committed to the implementation of a coaching model as part of the district or school Rtl Framework



Cost

\$390 per participant

Fee includes registration, networking lunch, materials, and text for all six sessions.

Cohorts are limited to 50 participants. If a waiting list for any cohort reaches 25 names, an additional cohort may be opened.

For questions contact: Heidi Laabs | laabsh@wisconsinrtcenter.org | 608-853-8330 - OR - Kathy Myles | mylesk@wisconsinrtcenter.org | 262-312-8616

REGISTRATION & ADDITIONAL INFORMATION AVAILABLE ONLINE AT:

<http://www.wisconsinrtcenter.org/event/all.html>

For more information about the training, please email Kate Higley at higleyk@wisconsinrtcenter.org or call (715) 720-2137.